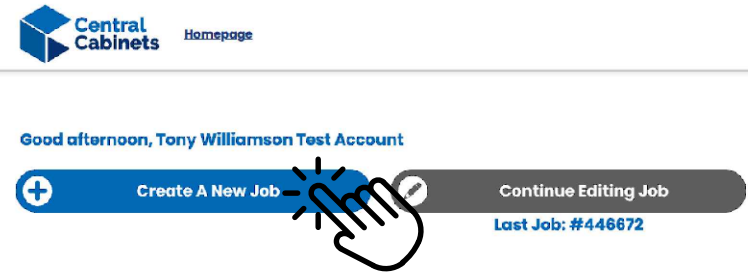
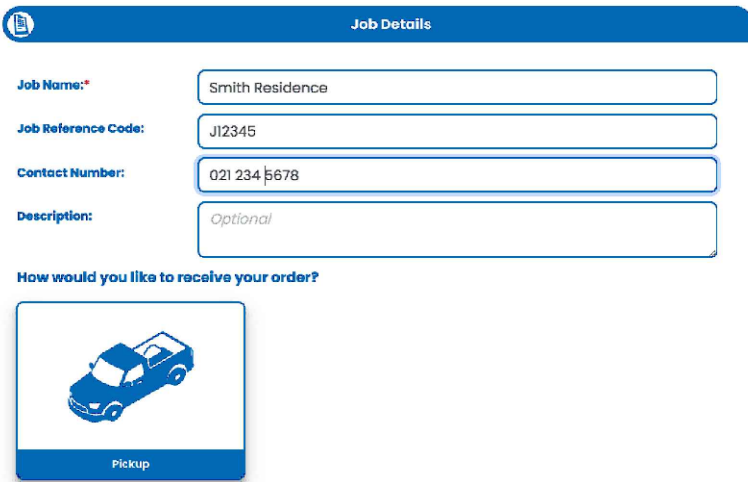


Online Portal - Quick Start Guide

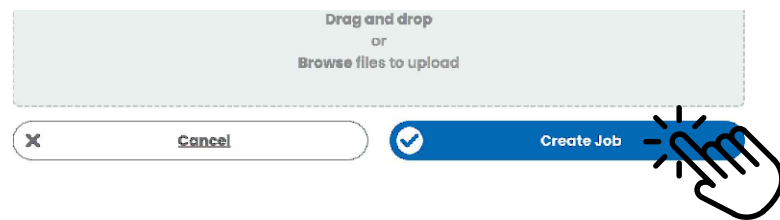
1 Create a New Job:



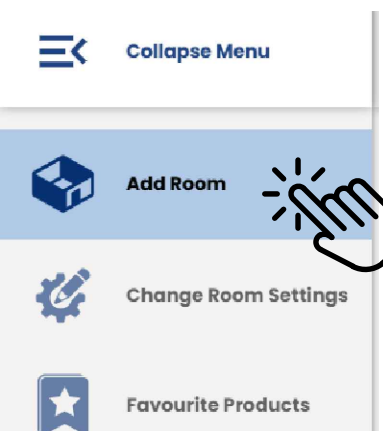
2 Enter Your Job Details:



3 Click "Create Job":



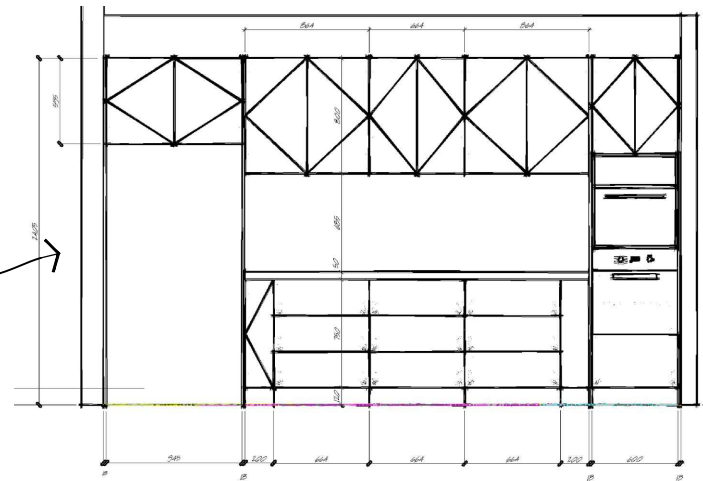
4 Click "Add Room":



Consider making a sketch

! Tip
Remember to allow for a 18 wide x 90 filler return where cabinet is next to a wall.

6 Design Sketch:



5 Setup Your Room:

Select your preferred drawer model.
! Tip
To compare drawer types prices, come back later and update selection. Prices of your drawer products in this room will update automatically.

Exterior colour is default material for drawer and door fronts, panels and open cabinets.

! Tip
If you only need one or two cabinets consider one of the following colours as these do not carry a minimum one sheet charge:

- Prime "White" | Embossed (cheapest)
- Melteca "Snowdrift" | Naturale
- Melteca "Classic Oak | Puregrain
- Melteca "Oiled Legno" | Puregrain
- Melteca "Blackened Legno" | Puregrain



Enter your room name

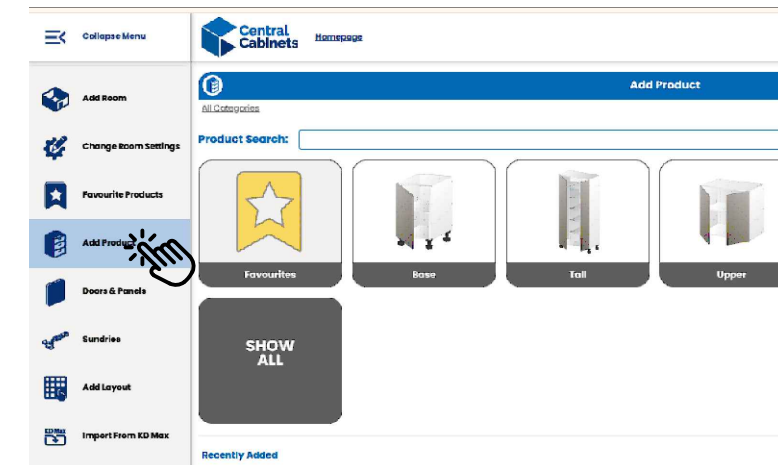
Standard carcass material is 16mm white melamine

Just use the default gap settings here.

Change cabinet dimensions as required

Save room when done

7 Add Products:



You are now set up to start adding products to your room. Typically with your room setting set up correctly, you may only need to set the width, however you may wish to adjust drawer heights and shelf positions etc.